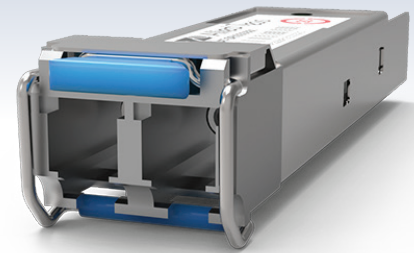


SP10 Series

10 Gigabit Small Form-Factor Pluggable Modules

The Allied Telesis SP10 Series offers a wide variety of 10 Gigabit Ethernet connectivity options for data center, enterprise and service provider transport applications. These industry-standard hot-swappable devices simply plug into the Ethernet SFP+ port on all SFP+-compatible devices. Configuration can be optimized to meet a wide variety of distance and service requirements.



Compatibility

Allied Telesis SP10 Series 10 Gigabit SFP+ modules are supported on all Allied Telesis devices with SFP+ uplink connections.

Options

The SP10 Series offers short-haul and long-haul solutions. From the inexpensive Allied Telesis SP10SR to the far-reaching Allied Telesis SP10ZR80/I, the network can be extended to meet any performance needs.

Interoperability

The SP10 Series SFP+ modules fully comply with industry-standard networking regulations. This allows the SP10 Series to be used with any networking equipment which complies with industry standards.

BiDi transceivers

Using an SFP BiDi transceiver can upgrade transmission capacity on a typical network—without installing new fibers—by utilizing a single fiber for both the send and receive signals.

Applications

The extended temperature optics offer a wide operating temperature range of -40C to 85C, allowing deployment in even the harshest industrial environments.

Key Features

- ▶ 10Gbps data rate
- ▶ Compact size
- ▶ Flexible architecture
- ▶ Hot-swappable
- ▶ RoHS compliant
- ▶ Compliant to SFP+ Electrical MSA SFF-8431
- ▶ Compliant to SFF-8472 MSA
- ▶ Lower power consumption < 1 Watt
- ▶ Digital diagnostics monitoring (DDM)
- ▶ Maximum data rate of 10.3Gbps
- ▶ BiDi options available

Specifications

MODEL	FIBER TYPE	CONNECTOR TYPE	MAXIMUM DISTANCE	WAVELENGTH Tx/Rx (nm)	DDM*	TRANSMIT (dBm)		RECEIVE SENSITIVITY (dBm)	Power Budget (dBm)	OVERLOAD (dBm)	OPERATING TEMPERATURE
						MIN	MAX				
SP10T	100/1G/10G	RJ45	Cat 6a/7 - 20 m	-	-	-	-	-	-	-	-5°C to 85°C (23°F to 185°F)
SP10TM	10/100/1/2.5/5/10G	RJ45	Cat 6a/7 - 30 m Cat 5e - 100 m (up to 5G)	-	-	-	-	-	-	-	-5°C to 85°C (23°F to 185°F)
SP10SR	MMF	LC	OM1 - 33 m OM2 - 82 m	850	Yes	-7	-1	-12	5	-1	0°C to 70°C (32°F to 158°F)
SP10SR/I	MMF	LC	OM3 - 300 m OM4 - 470 m	850	Yes	-5	-1	-10	5	-1	-40°C to 85°C (-40°F to 185°F)
SP10LRa/I	SMF	LC	Up to 10 km	1310	Yes	-8	1	-14	6	1	-40°C to 85°C (-40°F to 185°F)
SP10ZR80/I	SMF	LC	Up to 80 km	1550	Yes	0	5	-20	20	1	-40°C to 85°C (-40°F to 185°F)
SP10BD10/I-12	SMF	LC	up to 10 km	1270/1330	Yes	-6	-1	-14	8	1	-40°C to 85°C (-40°F to 185°F)
SP10BD10/I-13	SMF	LC	up to 10 km	1330/1270	Yes	-6	-1	-14	8	1	-40°C to 85°C (-40°F to 185°F)
SP10BD20-12	SMF	LC	uo to 20 km	1270/1330	Yes	-3	3	-15	12	1	0°C to 70°C (32°F to 158°F)
SP10BD20-13	SMF	LC	uo to 20 km	1330/1270	Yes	-3	3	-15	12	1	0°C to 70°C (32°F to 158°F)
SP10BD40/I-12	SMF	LC	uo to 40 km	1270/1330	Yes	-1	4	-15	14	1	-40°C to 85°C (-40°F to 185°F)
SP10BD40/I-13	SMF	LC	uo to 40 km	1330/1270	Yes	-1	4	-15	14	1	-40°C to 85°C (-40°F to 185°F)
SP10BD80/I-14	SMF	LC	uo to 80 km	1490/1550	Yes	1	5	-15	16	1	-5°C to 85°C (23°F to 185°F)
SP10BD80/I-15	SMF	LC	uo to 80 km	1550/1490	Yes	1	5	-15	16	1	-5°C to 85°C (23°F to 185°F)

Power consumption: <1W

*Digital Diagnostics Monitoring

SP10 Series | 10Gigabit Small Form-Factor Pluggable Modules

Environmental Specifications for Commercial Temperature Optics:

Operating temperature

Fiber: 0°C to 70°C (32°F to 158°F)

SP10T: -5°C to 85°C (23°F to 185°F)

Storage temperature: -40°C to 85°C (-40°F to 185°F)

Relative humidity: 0 to 80% non-condensing

Environmental Specifications for Industrial Temperature Optics:

Operating temperature: -40°C to 85°C (-40°F to 185°F)

Storage temperature: -40°C to 85°C (-40°F to 185°F)

Relative humidity: 0 to 85% non-condensing

Ordering Information

Commercial Temperature

AT-SP10T

100/1000/10000T, 20 m, CAT6a/7

AT-SP10TM

10/100/1G/2.5G/5G/10G, 30m/100m, TAA*

AT-SP10SR

10GBASE-SR, 850 nm, MMF, TAA*

Industrial Temperature

AT-SP10SR/I

10GBASE-SR, 850 nm, MMF, I-Temp, TAA*

AT-SP10LRa/I

10GBASE-LR, 1310 nm, 10 km with SMF, I-Temp, TAA*

AT-SP10ER40a/I

10GBASE-ER, 1550 nm, 40 km with SMF, I-Temp, TAA*

AT-SP10ZR80/I

10GBASE-ZR, 1550 nm, 80 km with SMF, I-Temp

BiDi Transceivers

AT-SP10BD10/I-12

10G 1270/1330, 10 km, I-Temp, TAA*

AT-SP10BD10/I-13

10G 1330/1270, 10 km, I-Temp, TAA*

AT-SP10BD20-12

10G 1270/1330, 20 km, TAA*

AT-SP10BD20-13

10G 1330/1270, 20 km, TAA*

AT-SP10BD40/I-12

10G 1270/1330, 40 km, I-Temp, TAA*

AT-SP10BD40/I-13

10G 1330/1270, 40 km, I-Temp, TAA*

AT-SP10BD80/I-14

10G 1490/1550, 80 km, I-Temp, TAA*

AT-SP10BD80/I-15

10G 1550/1490, 80 km, I-Temp, TAA*

*TAA = Trade Act Agreement Compliant