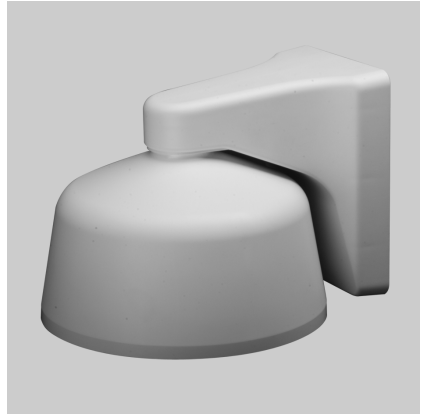




INSTALLATION

SWM5-W/SWM5-B Wall Mount



Indoor Only

C2223M-B (2/18)

Important Safety Instructions

1. Read these instructions.
2. Keep these instructions.
3. Heed all warnings.
4. Follow all instructions.
5. Only use attachments/accessories specified by the manufacturer.
6. Use only with the cart, stand, tripod, bracket, or table specified by the manufacturer, or sold with the apparatus. When a cart is used, use caution when moving the cart/apparatus combination to avoid injury from tip-over.
7. Installation should be done only by qualified personnel and conform to all local codes.
8. Use only installation methods and materials capable of supporting four times the maximum specified load.
9. Use only replacement parts recommended by Pelco.

Description

The SWM5-W/SWM5-B wall mount is specifically designed for the Spectra® Mini dome system. The mount offers full feedthrough connections for a clean installation with no exposed wires.

Installation

The following parts are supplied:

- 1 Adapter plate with locking screw
- 1 Wall mount
- 2 8-15 x 0.75-inch screws (Used to attach the dome drive to the mount.)

NOTE: The hardware to mount the adapter plate to the junction box (See Figure 1 below) is not included.

To install the SWM5-W/SWM5-B wall mount:

1. Run power, video (coax or UTP), and camera control wiring to the mounting location. If you are using coax video, do not attach a BNC connector to the cable until step 5. Refer to Table D, Table E, and Table F in the installation manual for the Spectra Mini dome for wiring information.
2. Thread the power, video (coax or UTP), and control wiring through the large access hole in the adapter plate. Then attach the adapter plate to the mounting surface using either the top/bottom or left/right pair of mounting holes. (The top/bottom pair is shown in Figure 1.)

NOTE: If mounting to anything other than a junction box, select appropriate mounting hardware for the mounting surface.

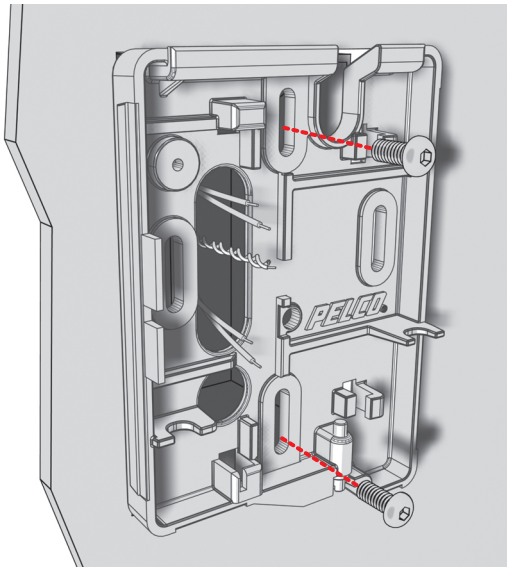


Figure 1. Mounting the Adapter Plate

3. Thread the wiring through the wall mount, and then attach the mount to the adapter plate:
 - a. Locate the mount hooks in the mount. Hang these hooks onto the adapter plate guides.
 - b. Make sure all wires are enclosed in the mount.
 - c. Rock the mount into place.

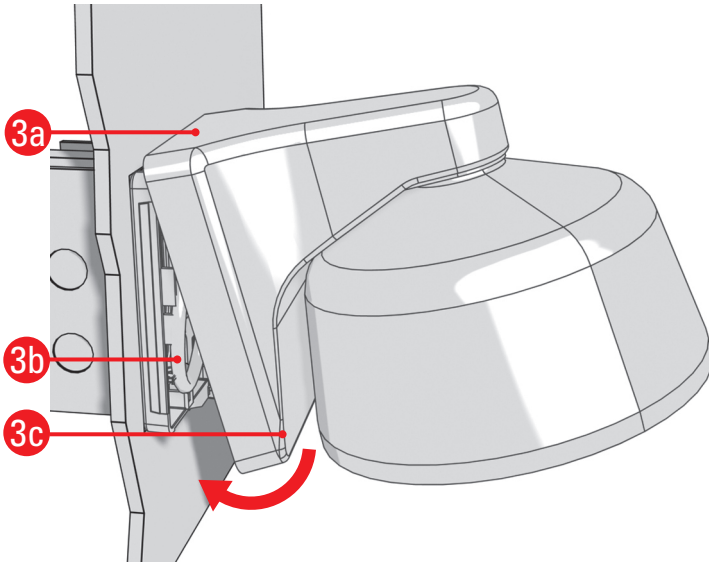


Figure 2. Attaching the Mount

4. Lock the mount:
 - a. Locate the slide lock at the base of the mount. Slide it to the right to secure the mount.
 - b. Turn the locking screw counterclockwise until the slide lock is secured.

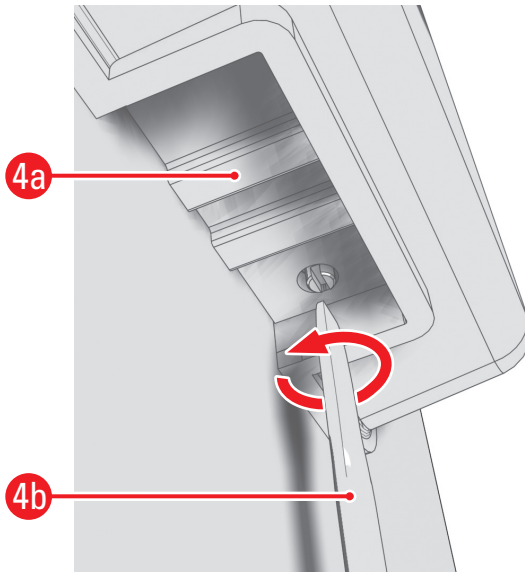


Figure 3. Locking the Mount

5. If you are using coax video, attach a female BNC connector to the coax cable.
6. Install the Spectra Mini dome in the mount. Follow the instructions in the *Switch Settings* and *Hard Ceiling* installation sections of the installation manual for the Spectra Mini dome system. In the *Hard Ceiling* section, disregard step 2 about cutting holes in the ceiling. In step 5 of the same section, attach the dome drive to the mount with the two 8-15 x 0.75-inch screws that are supplied with the mount.

Specifications

MECHANICAL

Mounting Method Attach the mount to wall; or attach to a junction box.

GENERAL

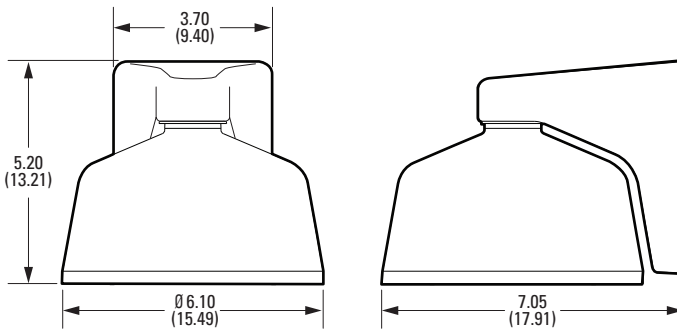
Construction

Mount ABS plastic


Adapter Plate Aluminum

Finish White (SWM5-W) or Black (SWM5-B)

Weight 0.72lb (0.33 kg)



NOTE: VALUES IN PARENTHESES ARE CENTIMETERS; ALL OTHERS ARE INCHES.

 Green The materials used in the manufacture of this document and its components are compliant to the requirements of Directive 2002/95/EC.



This equipment contains electrical or electronic components that must be recycled properly to comply with Directive 2002/96/EC of the European Union regarding the disposal of waste electrical and electronic equipment (WEEE). Contact your local dealer for procedures for recycling this equipment.

REVISION HISTORY

Manual #	Date	Comments
CZ223M	1/06	Original version.
CZ223M-A	2/06	Revised installation instructions regarding coaxial cable.
CZ223M-B	1/18	Updated part numbers, etc.

Pelco, the Pelco logo, and other trademarks associated with Pelco products referred to in this publication are trademarks of Pelco, Inc. or its affiliates. ONVIF and the ONVIF logo are trademarks of ONVIF Inc. All other product names and services are the property of their respective companies.

Product specifications and availability are subject to change without notice.

© Copyright 2018, Pelco, Inc.

All rights reserved.

PELCOTM

Pelco, Inc. 625 W. Alluvial Ave. Fresno, California 93711 United States
USA & Canada Tel (800) 289-9100 Fax (800) 289-9150
International Tel +1 (559) 292-1981 Fax +1 (559) 348-1120
www.pelco.com